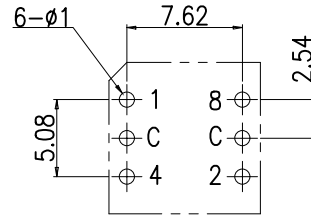


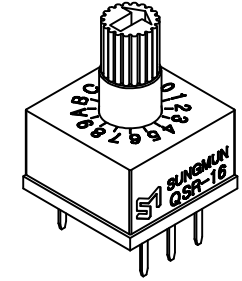
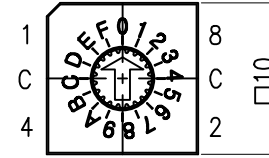
REV NO.	DATE	REVISION	DR	CH	APP
△					

SPECIFICATION

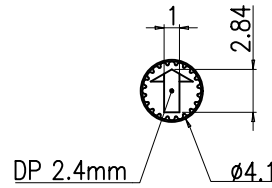
- Rating : 150mA, DC 42V (Switching)
200mA, DC 42V (None-Switching)
- Contact Resistance : 80mΩ Max
- Insulation Resistance : 100MΩ Min at DC 250V
- Operating Force : 700gf Max
- Life cycle : 10,000 steps
- Sealing : IP67 (Dust & Water proof)
- Packing : 50pcs Tube



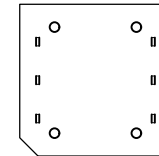
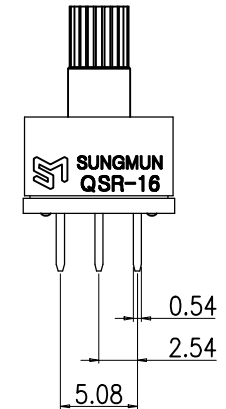
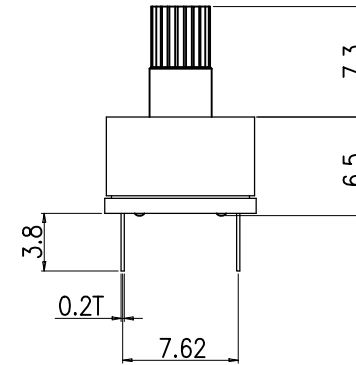
P.C.B DIMENSION (Top View)



		Real Coded					
		C	1	2	4	8	
16 Positions	0	●					0
	1	●	●				1
	2	●		●			2
	3	●	●	●			3
	4	●			●		4
	5	●	●		●		5
	6	●		●	●		6
	7	●	●	●	●		7
	8	●				●	8
	9	●	●			●	9
	10	●		●		●	A
	11	●	●	●		●	B
	12	●			●	●	C
	13	●	●		●	●	D
	14	●		●	●	●	E
	15	●	●	●	●	●	F



ACTUATOR



Din ISO-2768-1m					
Ranges	0.5~3	3~6	6~30	30~120	120~400
Tolerance	±0.1	±0.1	±0.2	±0.3	±0.5

DRAW/DESIGNED	CHECKED	APPROVED	G.TOL	ROTARY DIP SWITCH	
H.S LEE	K.N KIM	W.J LEE	UN	QSR-16	REV.
2023-09-05	2023-09-05	2023-09-05	mm	QSR-16(LG)-01	01
邦斯达 BONSDA 深圳市子庚科技有限公司			SCALE	MODE	
			N:S	NO	
			SIZE	DRAW	
			A4	NO.	

