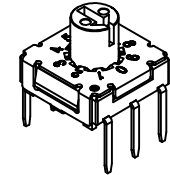
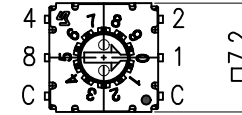
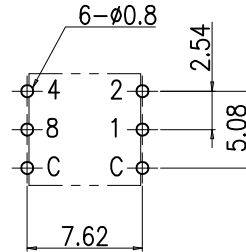


REV NO.	DATE	REVISION	DR	CH	APP
△					

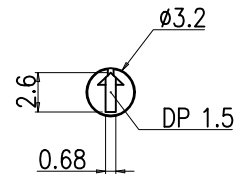
SPECIFICATION

- Rating : 100mA, DC 5V (Switching)
100mA, DC 50V (None-Switching)
- Contact Resistance : 100mΩ Max
- Insulation Resistance : 100MΩ Min at DC 100V
- Operating Force : 200gf Max
- Life cycle : 25,000 steps
- Sealing : IP67 (Dust & Water proof)
- Packing : 70pcs Tube

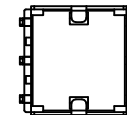
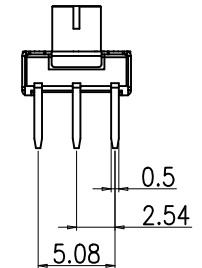
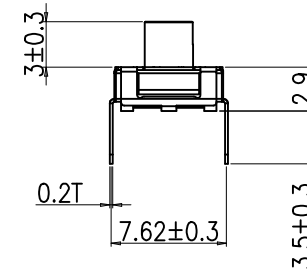


P.C.B DIMENSION (Top View)

		Real Coded					
		C	1	2	4	8	
10 P o s i t i o n	0	●					0
	1	●	●				1
	2	●		●			2
	3	●	●	●			3
	4	●			●		4
	5	●	●		●		5
	6	●		●	●		6
	7	●	●	●	●		7
	8	●				●	8
	9	●	●			●	9



ACTUATOR



Din ISO-2768-1m						DRAW/DESIGNED	CHECKED	APPROVED	G.T.C.	TEL	COMPACT ROTARY DIP SWITCH		
Ranges	0.5~3	3~6	6~30	30~120	120~400	H.S LEE	K.N KIM	W. LEE	UN	SCALE	MODE	GSPR-10	REV.
Tolerance	±0.1	±0.1	±0.2	±0.3	±0.5	2023-09-25	2023-09-25	2023-09-25	mm	N:S	NO	GSPR-10(LG)-01	01
						邦斯达 BONSDA 深圳市子庚科技有限公司			SIZE	DRAW	NO.		
									A4				